

Rossdale Transportation Network

Information Booklet – November 2021

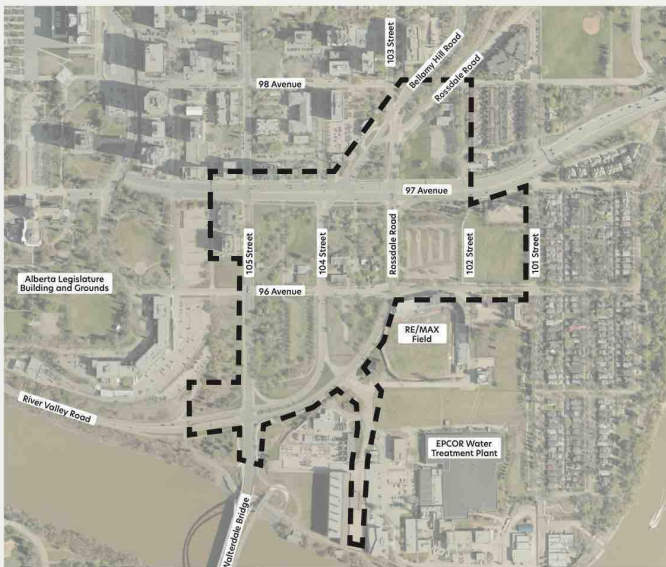
The River Crossing Business Plan envisions the Rossdale project area as a place that welcomes gathering, encourages active transportation (walking, cycling and wheeling) and accommodates drivers travelling into and out of the Rossdale neighbourhood. Guided by this vision, the Rossdale Transportation Network project is in the design stage.

The Project Team determined how the roadway network, outlined in the River Crossing Business Plan, can be designed to ensure streets and avenues function as efficiently as possible for all users. The transportation network plan includes traffic directions, road closures and new connections required to ensure that all modes of transportation can be used to move to, from and within the River Crossing area.

The transportation network plan also considers future development in the area and identifies streets and avenues that would benefit from streetscaping (landscaping, street furniture), active transportation connections and parking. Your feedback on these

ideas will help the Project Team develop a design for great, walkable streets with connections for all users. Please review and provide your feedback in our survey ([link on final page of this booklet](#)).

The draft concept design, to be shared in spring 2022, will consider public feedback and include designs for active transportation, streetscape elements, number of roadway lanes and parking areas.



Rossdale Transportation Network project area

SHARE YOUR VOICE
SHAPE OUR CITY





Rendering of the River Crossing area (River Crossing Business Plan)

Land acknowledgement

The City of Edmonton acknowledges the traditional land on which we reside, is in Treaty Six Territory. We would like to thank the diverse Indigenous Peoples whose ancestors' footsteps have marked this territory for centuries, such as nêhiyaw (Cree), Dené, Anishinaabe (Saulteaux), Nakota Isga (Nakota Sioux), and Niitsitapi (Blackfoot) peoples.

We also acknowledge this as the Métis' homeland and the home of one of the largest communities of Inuit south of the 60th parallel.

It is a welcoming place for all peoples who come from around the world to share Edmonton as a home. Together we call upon all of our collective, honoured traditions and spirits to work in building a great city for today and future generations.

[Main Page](#) ▲

SHARE YOUR VOICE
SHAPE OUR CITY



Contents

- + Rossdale transportation network: Page 4**
 - Active transportation connections and streetscapes Page 4
 - Traffic flow: current and future Page 6
 - Rossdale Road South (97 Avenue to 105 Street) Page 7
 - Bellamy Hill Road / 97 Avenue / Rossdale Road / 103 Street Page 8
 - 102 Street between 97 and 96 Avenue (New connection) Page 9
 - 104 Street between Rossdale Road to 97 Avenue Page 10
 - 96 Avenue between 105 Street and 101 Street Page 11
 - Rossdale Power Plant / Water Treatment Plant Access Road Page 12
 - 105 Street between Rossdale Road and 97 Street Page 13
 - 97 Avenue between 105 Street and 102 Street Page 14
- + Project background Page 15**
 - How we got here Page 16
- + Project roadmap Page 17**
- + Public engagement Page 18**
- + How decisions are made Page 19**
- + Tell us what you think! Survey Page 19**
- + What happens next Page 20**



[Main Page ▲](#)

SHARE YOUR VOICE
SHAPE OUR CITY



Rossdale Transportation Network INFORMATION BOOKLET

Rossdale transportation network

River Crossing Business Plan: The vision of the River Crossing Business Plan is to transform the central river valley into a vibrant community and special gathering space. It calls for an interpretive park, new residential developments, Touch the Water Promenade and a restoration of the Rossdale Power Plant for future uses.

This booklet contains an overview of the roadway changes to the Rossdale transportation network and ideas to incorporate active transportation and streetscaping throughout the project area.

Once you have completed your review, please provide your input. [A link to the survey can be found on the last page of this booklet.](#)

REFINE

What is included in the Rossdale transportation network plan:

Active transportation connections and streetscapes

The transportation network plan will include designs for enhanced active transportation connections such as sidewalks and bike lanes, and streetscape elements such as landscaping and street furniture.

With current and future development in mind, the Project Team has recommended ideas and locations where these elements could be considered within the project area. Ensuring great connections for those who walk or wheel (wheelchair, roller blade, scooter, etc.) is a key element to the vision for the River Crossing area. The draft concept design (spring 2022), will include sidewalks, crossings and other pedestrian connections and streetscape elements along with the number of lanes, turn lanes and parking areas to be added that will support the vision of a highly walkable community.

[Main Page](#) ▲

SHARE YOUR VOICE
SHAPE OUR CITY

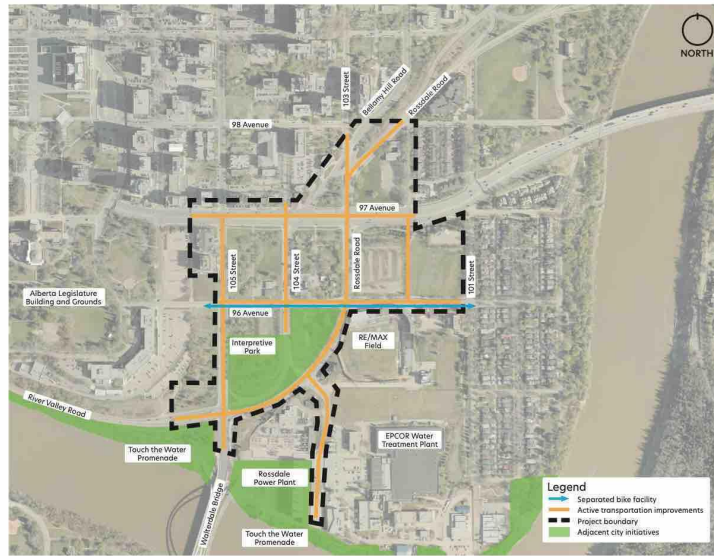


Rossdale Transportation Network INFORMATION BOOKLET

Cycling connections

The River Crossing Business Plan identifies a bike network that improves the cycling connectivity within and through the River Crossing area.

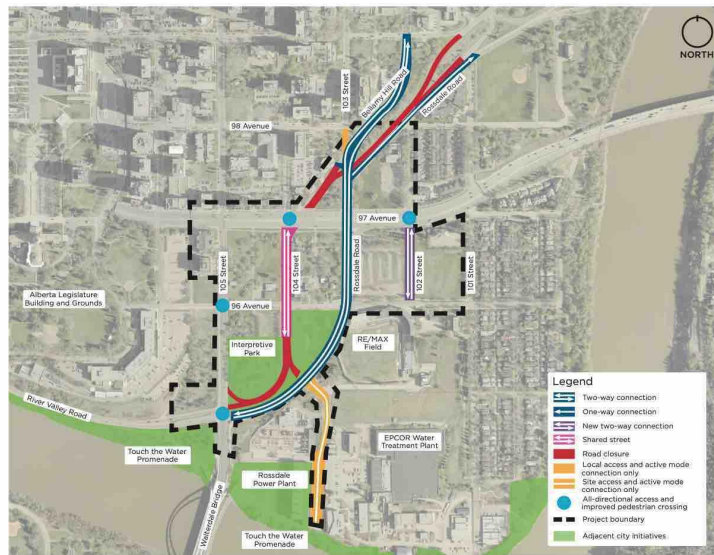
CYCLE CONNECTIONS



Roadway changes

To support the vision, the Business Plan has directed changes to the area's transportation network (streets and avenues) including new traffic flow directions, road closures, road builds and intersection improvements as outlined in this map. The number of lanes required and turning lanes needed will be determined and shared in the draft concept plan (spring 2022).

TRANSPORTATION NETWORK PLAN



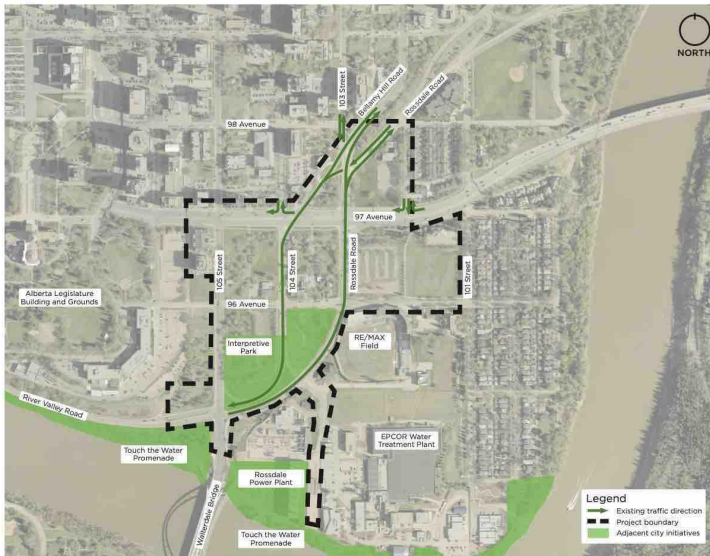
[Main Page](#) ▲

SHARE YOUR VOICE
SHAPE OUR CITY

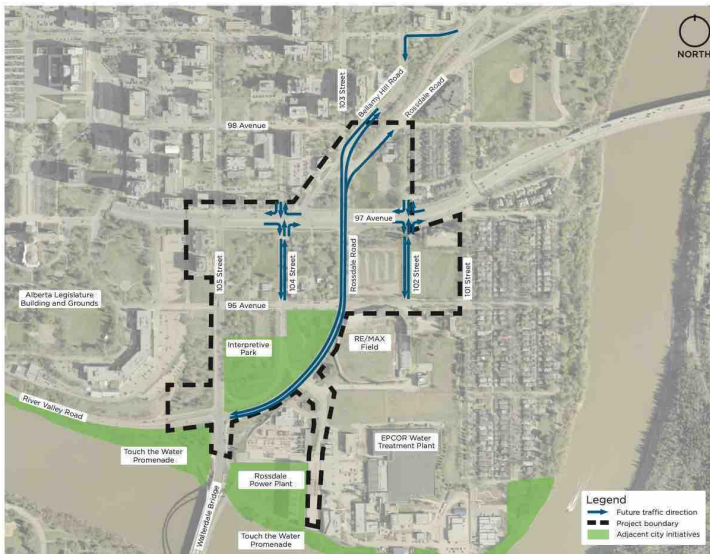


Rossdale Transportation Network INFORMATION BOOKLET

Traffic flow: current and future



**CURRENT
TRAFFIC
FLOW**



**FUTURE
TRAFFIC
FLOW**

The following pages provide a closer look at key sections within the project area.

Main Page ▲

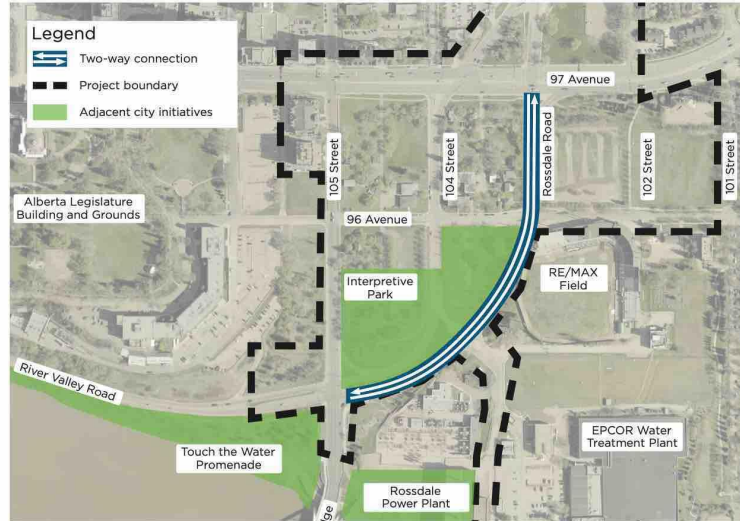
SHARE YOUR VOICE
SHAPE OUR CITY



Rossdale Road South (97 Avenue to 105 Street)

Sidewalks, bike lanes and landscaped boulevards will be considered to improve the experience for active users. Rossdale Road will open to two-way traffic providing a minimum one lane northbound and one lane southbound. Access to River Valley Road from Rossdale Road will be maintained.

NEW TWO-WAY TRAFFIC MOVEMENT



- River Crossing Business Plan direction:**
- + Improve the experience for those who walk, cycle and wheel and accommodate traffic.
 - + Roadway changes:
 - Two-way vehicle traffic (minimum one lane in each direction)

- Design ideas for this area include:**
- + Active transportation:
 - Wide pedestrian spaces
 - Space for a bike lane (type to be determined)
 - + Streetscape elements:
 - Landscaping, street furniture
 - Potential permanent on-street parking

[Main Page](#) ▲

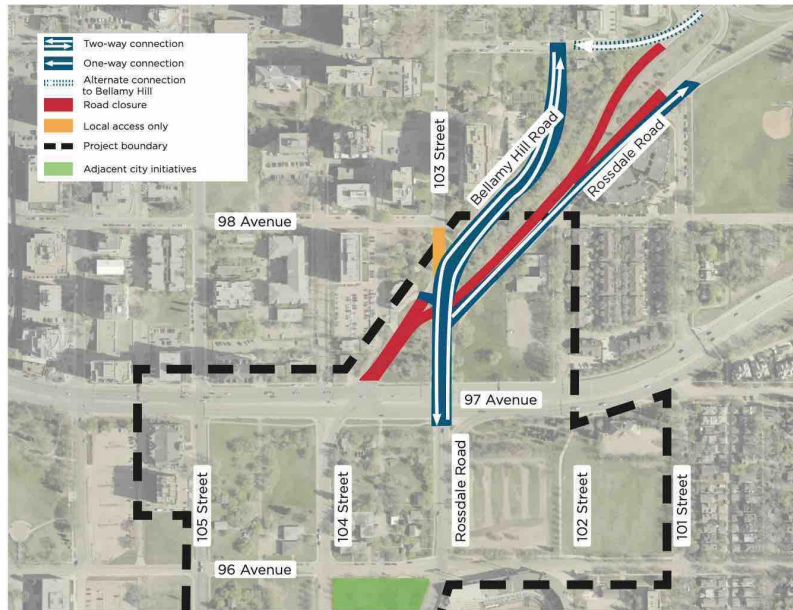
SHARE YOUR VOICE
SHAPE OUR CITY



Bellamy Hill Road / 97 Avenue / Rossdale Road / 103 Street intersection

To simplify this area, several of the current access and merge lanes will be closed or rerouted. The southbound access to 97 Avenue via 99 Avenue/ Bellamy Hill and the northbound route from 97 Avenue to Rossdale Road will be maintained.

ROADWAY CHANGES AND TRAFFIC MOVEMENTS



River Crossing Business Plan direction:

- + Simplify the vehicle traffic movements and intersections in this area to decrease driver confusion and improve safety for those who walk, cycle and wheel
- + Roadway changes:
 - Closure of Bellamy Hill Road between 103 Street and 97 Avenue
 - Closure of vehicle access on 103 Street between 98 Avenue and Bellamy Hill Road
 - Rossdale Road (north of 97 Avenue) westbound-only
 - Southbound traffic on Rossdale Road will be rerouted at 99 Avenue to Bellamy Hill Road

Design ideas for this area include:

- + Active transportation:
 - Enhanced connections (walking, cycling and wheeling)

[Main Page ▲](#)

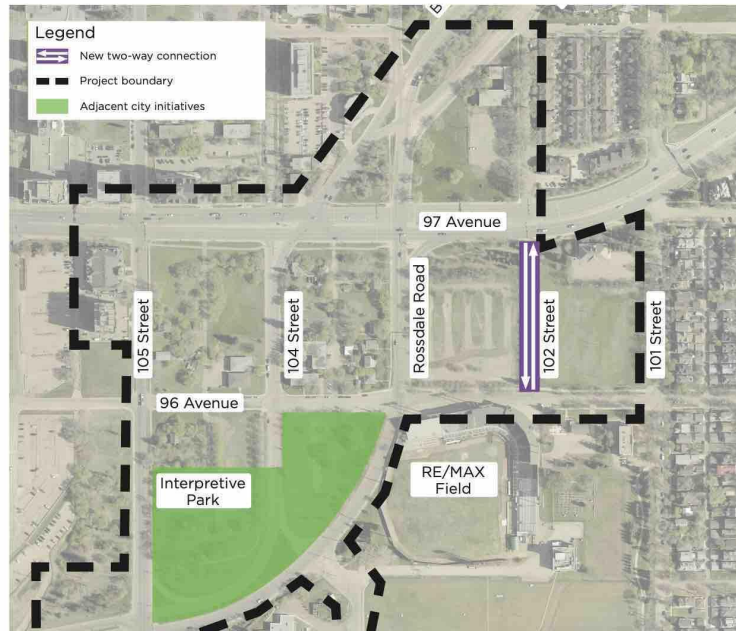
SHARE YOUR VOICE
 SHAPE OUR CITY



102 Street between 97 and 96 Avenue (New connection)

This new connection will provide important pedestrian and vehicle connections for a lively pedestrian-focused commercial street to support future redevelopment.

ROADWAY CHANGES AND TRAFFIC MOVEMENTS



River Crossing Business Plan direction:

- + To provide a new access to current and future destinations south of 97 Avenue
- + All-directional vehicle movements at 102 Street/ 97 Avenue intersection
- + Roadway changes:
 - Creation of a new two-way vehicle roadway connecting 97 Avenue to 96 Avenue

Design ideas for this area include:

- + Roadway:
 - Shared street (a street that prioritizes active transportation (walking, cycling and wheeling) and supports future commercial and retail development)
- + Active transportation:
 - Enhanced connections (walking, cycling and wheeling)
- + Streetscape elements:
 - Landscaping, street furniture
 - On-street parking

[Main Page ▲](#)

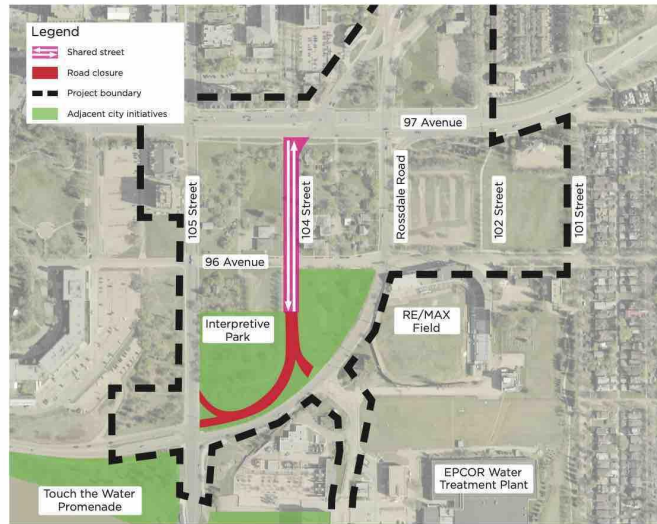
SHARE YOUR VOICE
 SHAPE OUR CITY



104 Street between Rossdale Road and 97 Avenue

With Rossdale Road accommodating northbound and southbound vehicle traffic within the River Crossing area, 104 Street's reduced traffic flow makes it a prime location for a lively pedestrian-focused commercial street. It will also be an important pedestrian connection to current and future attractions such as the interpretive park, Traditional Burial Grounds/ Fort Edmonton Cemetery, Rossdale Power Plant and Touch the Water Promenade.

ROADWAY CHANGES AND TRAFFIC MOVEMENTS



- River Crossing Business Plan direction:**
- + To create a shared street that prioritizes active transportation (walking, cycling and wheeling) and supports future commercial and retail development.
 - + Roadway changes:
 - Changed from one-way arterial connection to a two-way shared collector road
 - Road closed south of 96 Avenue
 - All-directional vehicle movements at 104 Avenue / 97 Street intersection

- Design ideas for this area include:**
- + Active transportation:
 - Enhanced connections (walking, cycling and wheeling)
 - + Streetscape elements:
 - Landscaping, street furniture
 - On-street parking

[Main Page](#) ▲

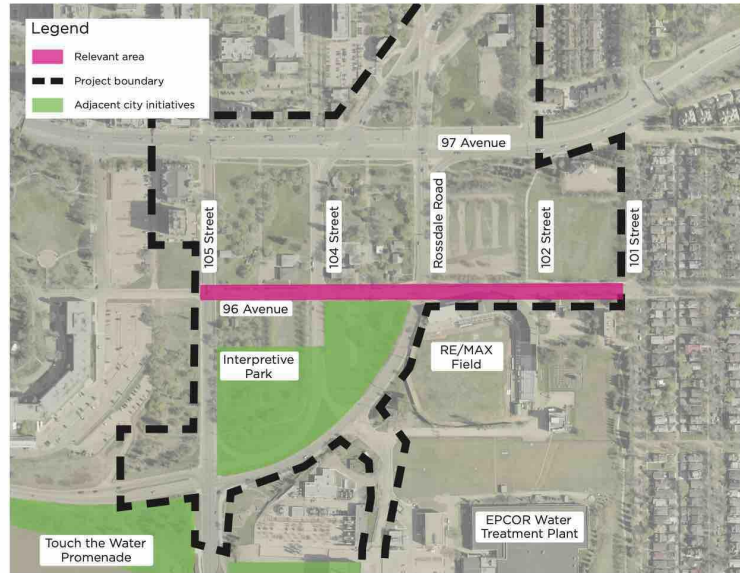
SHARE YOUR VOICE
SHAPE OUR CITY



96 Avenue between 105 Street and 101 Street

With its position between the River Crossing area, South Rossdale, the North Saskatchewan River, future interpretive park and the Legislature grounds, 96 Avenue is perfectly situated for an east-west active transportation connection and future retail destination.

96 AVENUE



River Crossing Business Plan direction:

- + To create an attractive community and retail-oriented street that prioritizes walking, cycling and wheeling
- + Roadway:
 - Two-way vehicle traffic (unchanged)

Design ideas for this area include:

- + Roadway:
 - Shared collector road (a street that prioritizes active transportation (walking, cycling and wheeling) and supports future commercial and retail development)
- + Active transportation:
 - Enhanced connections (walking, cycling and wheeling)
- + Streetscape elements:
 - Landscaping, street furniture
 - On-street parking

[Main Page](#) ▲

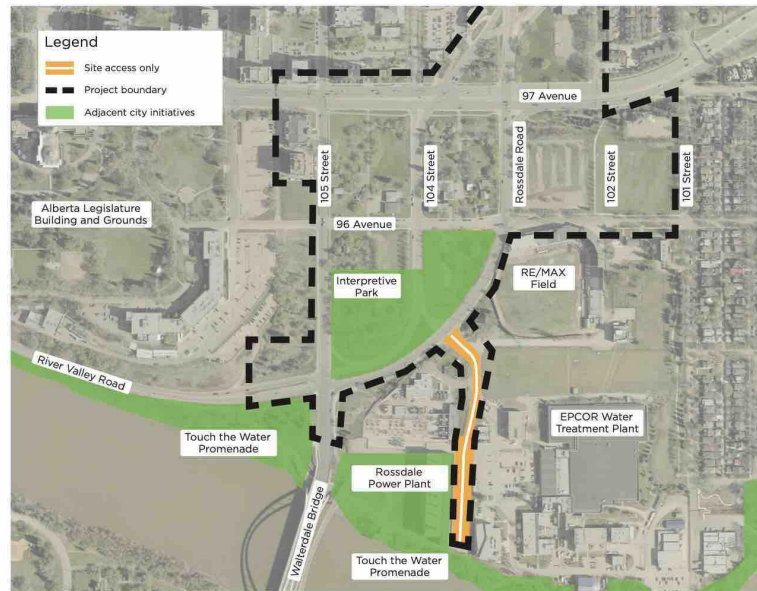
SHARE YOUR VOICE
SHAPE OUR CITY



Rossdale Power Plant / Water Treatment Plant Access Road

To support the redevelopment of the site, active transportation connections (walking, cycling and wheeling) to adjacent projects and future developments will be developed and enhanced. Vehicle access will be maintained.

ACCESS ROAD



River Crossing Business Plan direction:

- + Provide site access to the Rossdale Power Plant, Rossdale Water Treatment Plant and future developments
- + Roadway changes:
 - Two-way vehicle access to amenities - changed from private to public access

Design ideas for this area include:

- + Active transportation:
 - Enhanced connections (walking, cycling and wheeling)

[Main Page](#) ▲

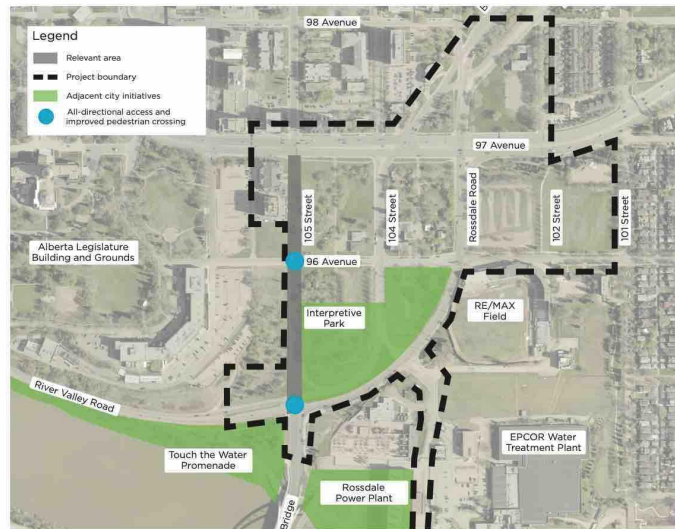
SHARE YOUR VOICE
 SHAPE OUR CITY



105 Street between Rossdale Road and 97 Avenue

Enhanced sidewalks with streetscaping will help to establish 105 Street as an important entryway to downtown. The intersections of 105 Street at River Valley Road and 96 Avenue will be improved to facilitate active transportation movements. 105 Street will continue to function as a one-way major arterial connection between south Edmonton and downtown.

105 STREET



River Crossing Business Plan direction:

- + Improve active transportation connections and highlight 105 Street as an important entryway into downtown.
- + Roadway:
 - One-way northbound vehicle traffic (unchanged)

Design ideas for this area include:

- + Active transportation:
 - Enhanced connections (walking, cycling and wheeling)
 - Intersection improvements at River Valley Road and 96 Avenue for active transportation
- + Streetscape elements:
 - Landscaping, street furniture



[Main Page](#) ▲

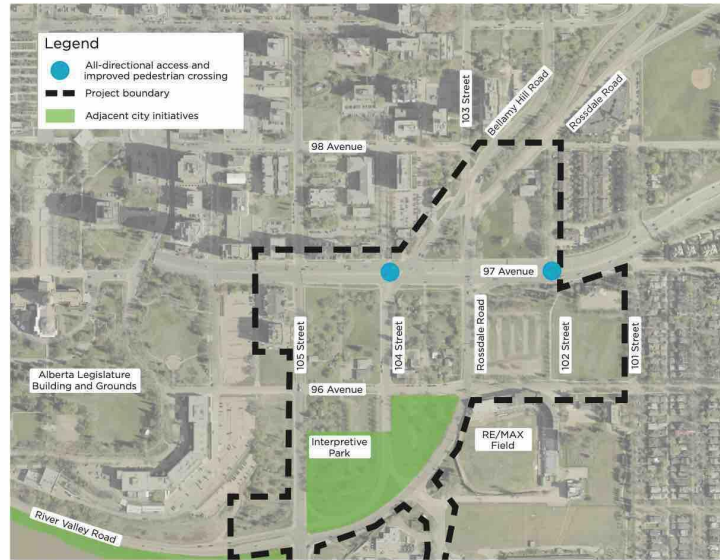
SHARE YOUR VOICE
SHAPE OUR CITY



97 Avenue between 105 Street and 102 Street

As the widest road in central Edmonton, 97 Avenue will be redesigned to make better use of the space for all users and increase the amount of the adjacent developable land. Streetscaping of this road will help minimize the impacts of this arterial road and enhance the environment for those who walk, cycle or wheel.

97 AVENUE INTERSECTIONS



River Crossing Business Plan direction:

- + Improve active transportation connections, enhance user experiences and reduce driver confusion
- + Roadway:
 - Improve intersection pedestrian crossings across 97 Avenue at:
 - 104 Street
 - 102 Street

Design ideas for this area include:

- + Active transportation:
 - Urban-style facility which could include wider sidewalks and streetscaping on the south side

[Main Page](#) ▲

SHARE YOUR VOICE
SHAPE OUR CITY



Project background

The River Crossing Business Plan (2019), the Rossdale Area Redevelopment Plan (ARP) updated in 2021, and the Heritage Interpretive Plan (2017) outline a vision for a long-term, city-building initiative to transform the central river valley into a vibrant community and special gathering place. They also provided direction as to how each of the roadways in the project area would function (for example, one-way or two-way, closures and new roads) which became the starting point for the Rossdale Transportation Network project.

The result is the transportation network plan that includes roadway widths, intersection configurations and identifies opportunities for improved active transportation connections.

More information on River Crossing and the River Crossing Business Plan can be found at edmonton.ca/RiverCrossing.



[Main Page](#) ▲

SHARE YOUR VOICE
SHAPE OUR CITY



How we got here:

Using the River Crossing Business Plan's (2019) recommendations as a starting point, the Project Team conducted technical studies of the project area to understand impacts on vehicular traffic flow and to determine the best design for the streets and avenues to function and support the overall transportation network the best they can (for example, one-way or two-way, closures and new roads) and connections for all users including those who walk, cycle and wheel.

The result is the transportation network plan that includes:

- ✦ Streets suited for enhanced active transportation (walking, cycling and wheeling) connections
- ✦ Where closures or new roads are needed for the roadway network to function the best it can for all users and support future redevelopment

Next steps will be the development of a draft concept design which will include the number of vehicle travel lanes and turn lanes, intersection improvements, sidewalks, shared-use paths and cycle connections, as well as trees, landscaping and other enhancements.

Review the River Crossing Business Plan at edmonton.ca/RiverCrossing.

[Main Page](#) ▲

SHARE YOUR VOICE
SHAPE OUR CITY



Project Roadmap

The Rossdale transportation network project is currently in the public engagement phase.



[Main Page](#) ▲

SHARE YOUR VOICE
SHAPE OUR CITY



Rossdale Transportation Network INFORMATION BOOKLET

City public engagement philosophy: Your input is important

The City of Edmonton is committed to involving the people affected by the decisions it makes. We seek diverse opinions, experiences and information so that a wide spectrum of information is available to decision makers. We commit to sharing project information as technical work progresses, and hosting meaningful, safe engagement opportunities.

Role of the public

The City's public engagement spectrum defines the public's level of influence in engagement processes. Visit edmonton.ca/PublicEngagement for more information.

Engagement activities in this phase are at the REFINE level on the City's Public Engagement Spectrum.



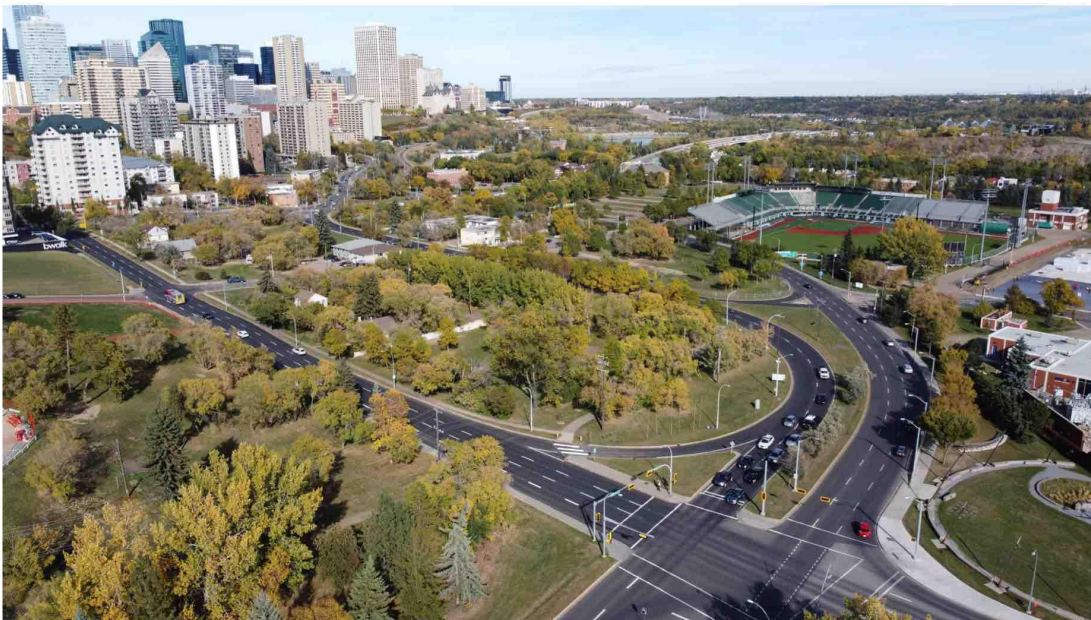
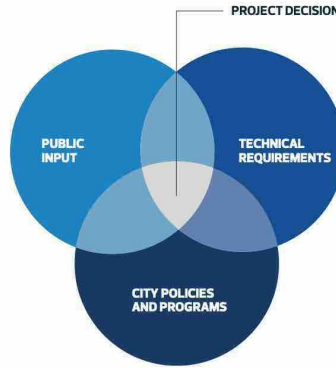
[Main Page](#) ▲

SHARE YOUR VOICE
SHAPE OUR CITY



How decisions are made

City policies and standards, public input and technical requirements are all taken into consideration when determining the future concept design.



Tell us what you think!

Complete the survey before December 8, 2021.

[Click for Survey](#)

REFINE

[Main Page ▲](#)

SHARE YOUR VOICE
SHAPE OUR CITY



Rossdale Transportation Network INFORMATION BOOKLET

What happens next

The Project Team will take the input gathered during this phase of public engagement to inform the draft concept design that will be presented in spring 2022. This will include the locations and types of sidewalks, shared-use paths and bike lanes for those who walk, cycle and wheel. It will also include streetscaping enhancements such as trees and other landscaping and street furniture along with the number of vehicle lanes and turn lanes.

Visit edmonton.ca/RossdaleTransportationNetwork to sign up for project email updates.



Rendering of the vision for the 96 Avenue area looking west

[Main Page](#) ▲

SHARE YOUR VOICE
SHAPE OUR CITY

